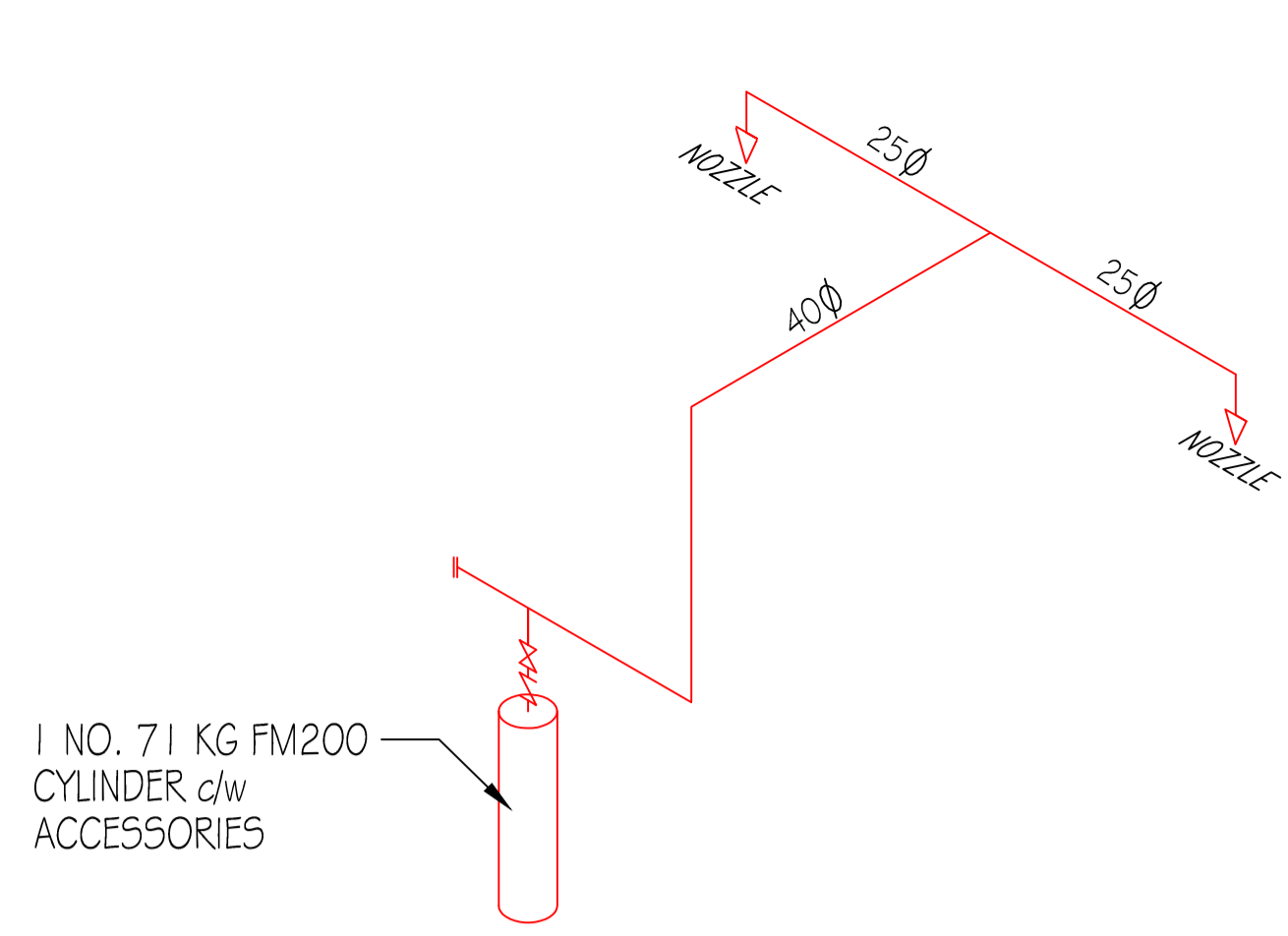
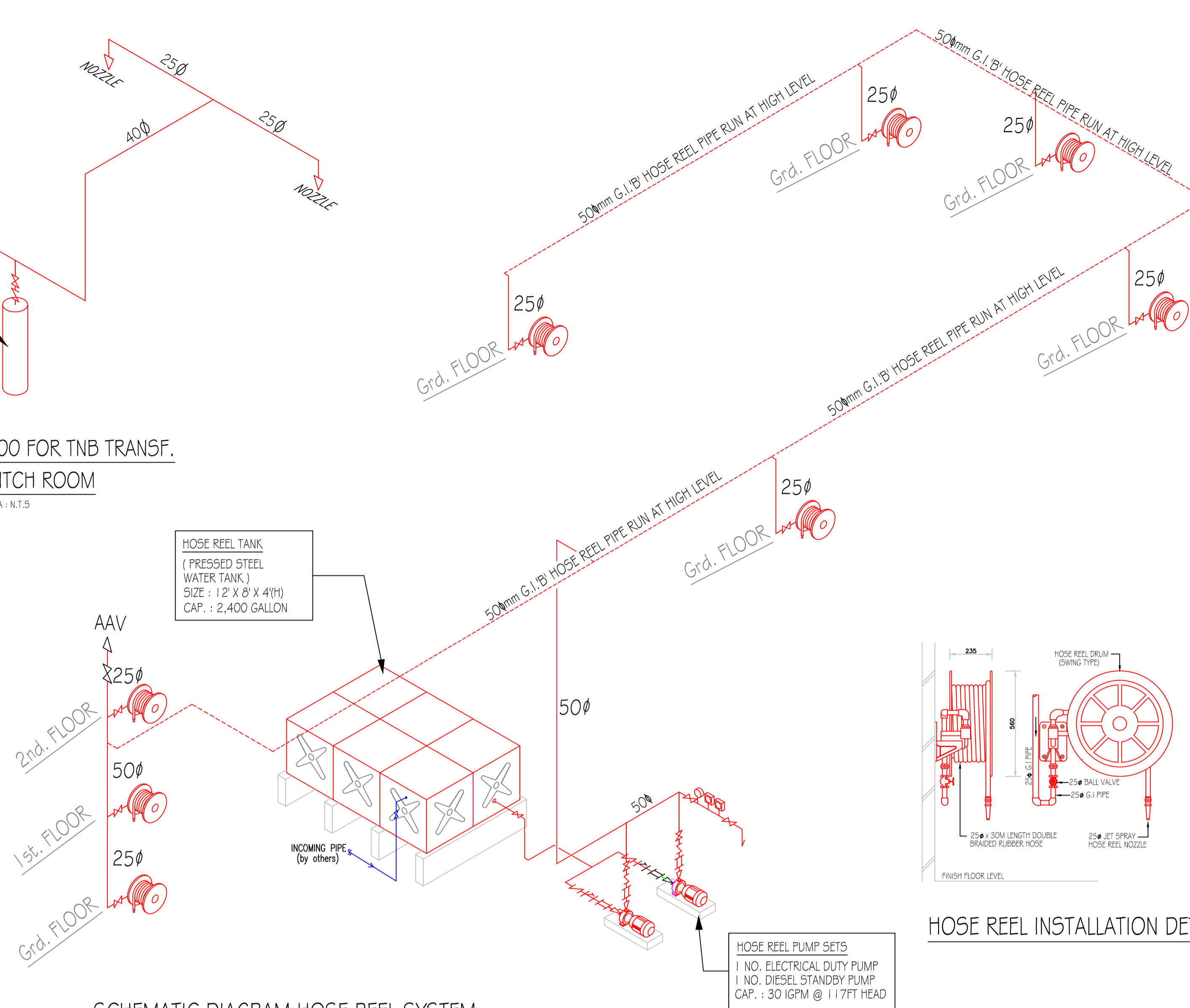


PELAN LANTAI FOR TNB TRANSF. & TNB SWITCH ROOM



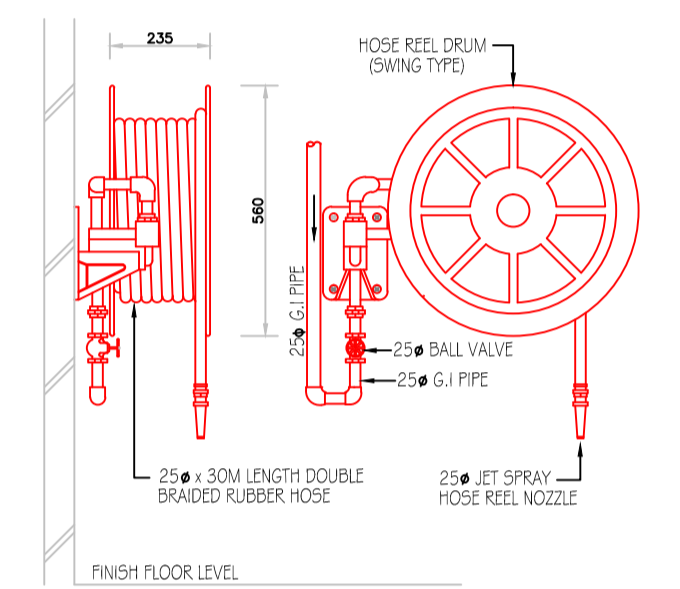
SCHEMATC FM200 FOR TNB TRANSF. & TNB SWITCH ROOM

SKALA : N.T.5

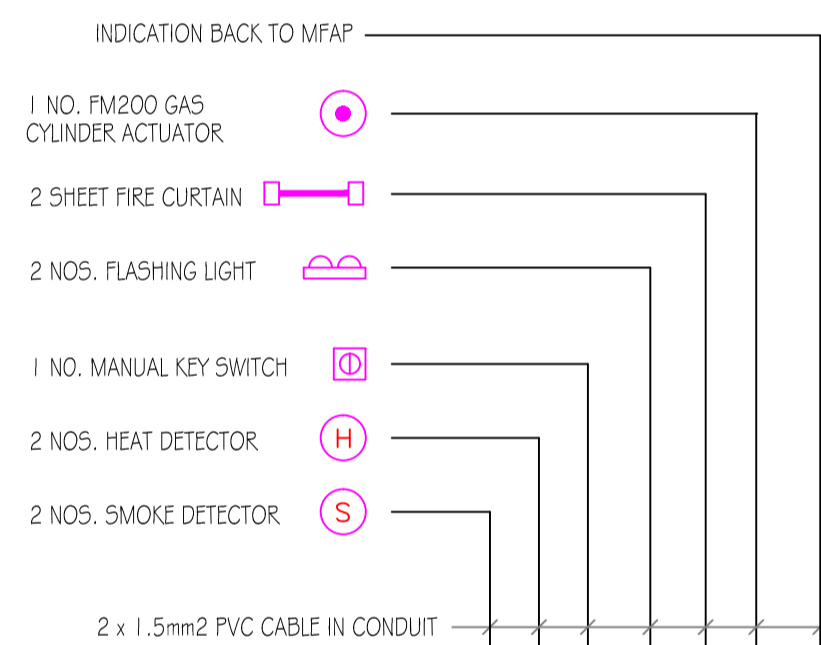


SCHEMATIC DIAGRAM HOSE REEL SYSTEM

SKALA : N.T.5



HOSE REEL INSTALLATION DETAIL

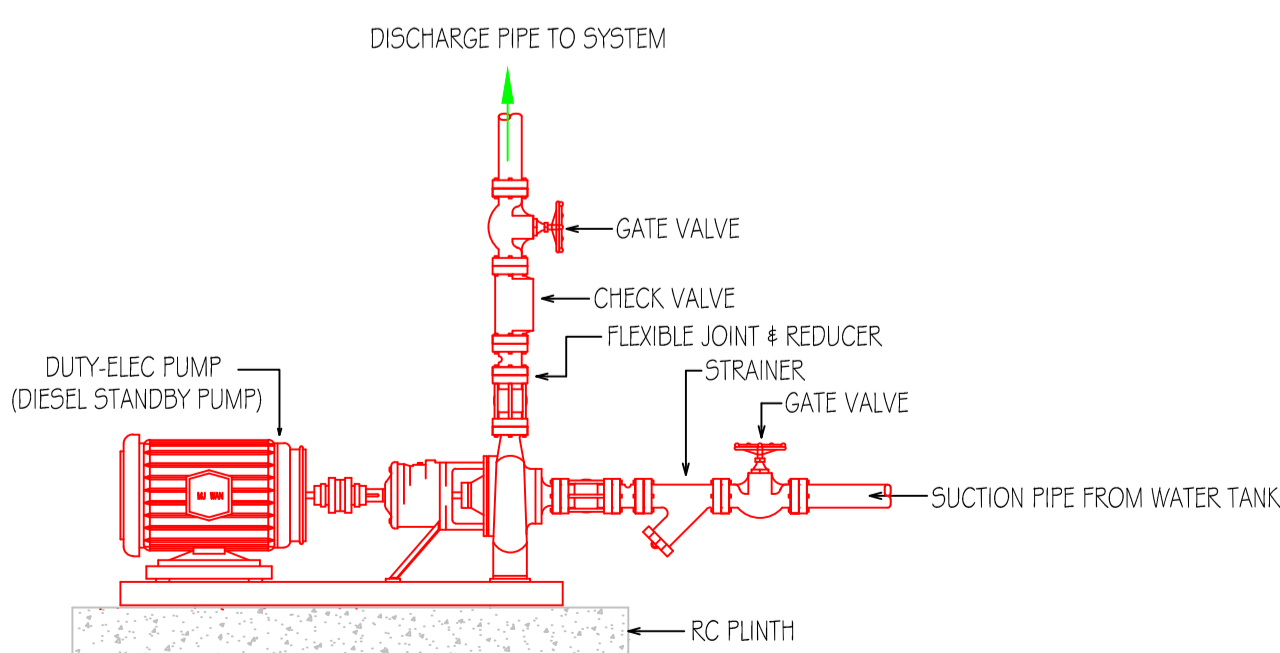


2 ZONE FM200 CONTROL PANEL CW 24V SLA BATTERY

SINGLE LINE DIAGRAM OF 2 ZONE FM200 CONTROL PANEL - TNB TRANSF. & TNB SWITCH ROOM

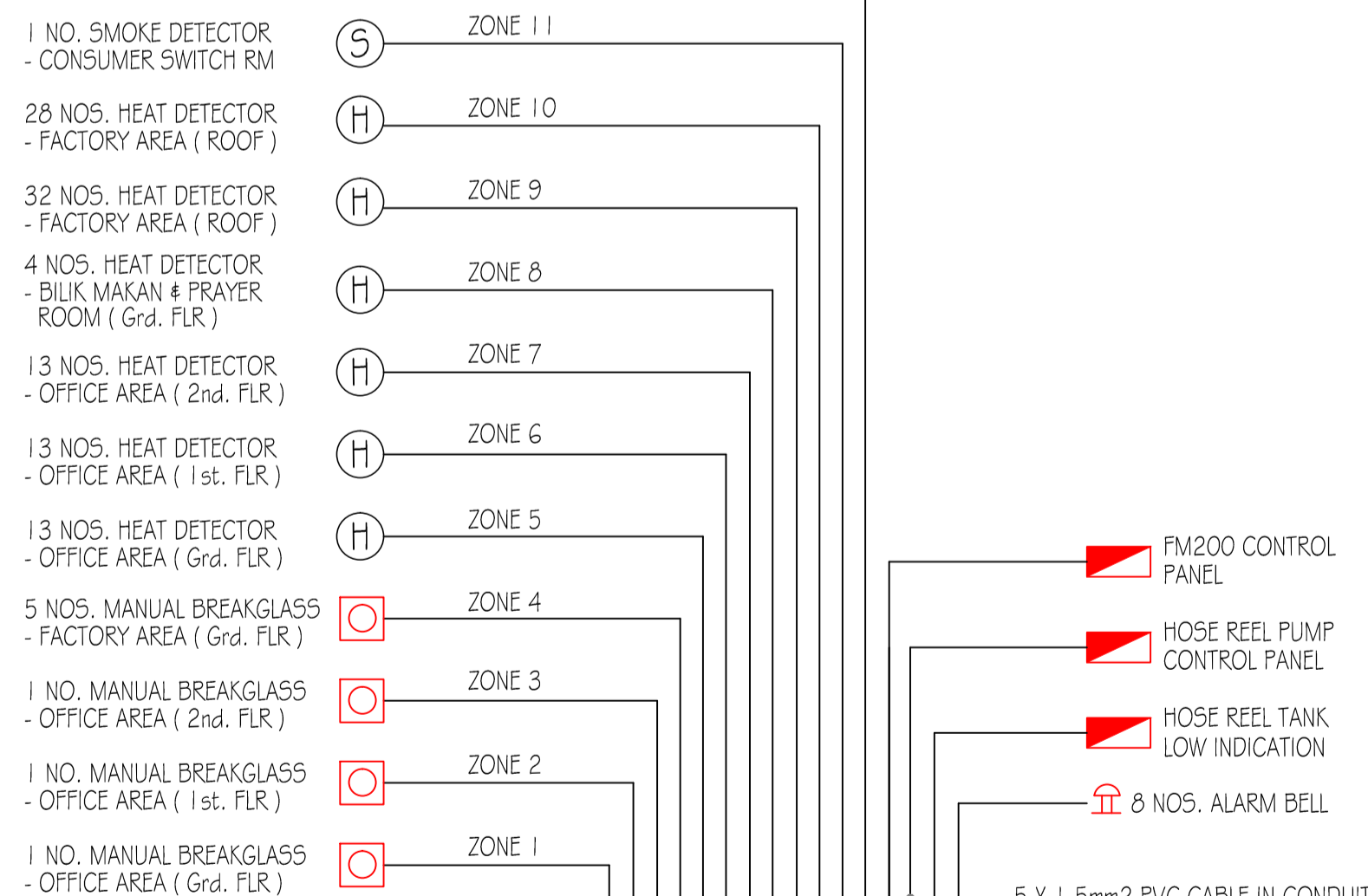
SKALA : N.T.5

230V AC POWER SUPPLY (BY OTHER)



PUMPSET CONNECTION DETAIL

SKALA : N.T.5



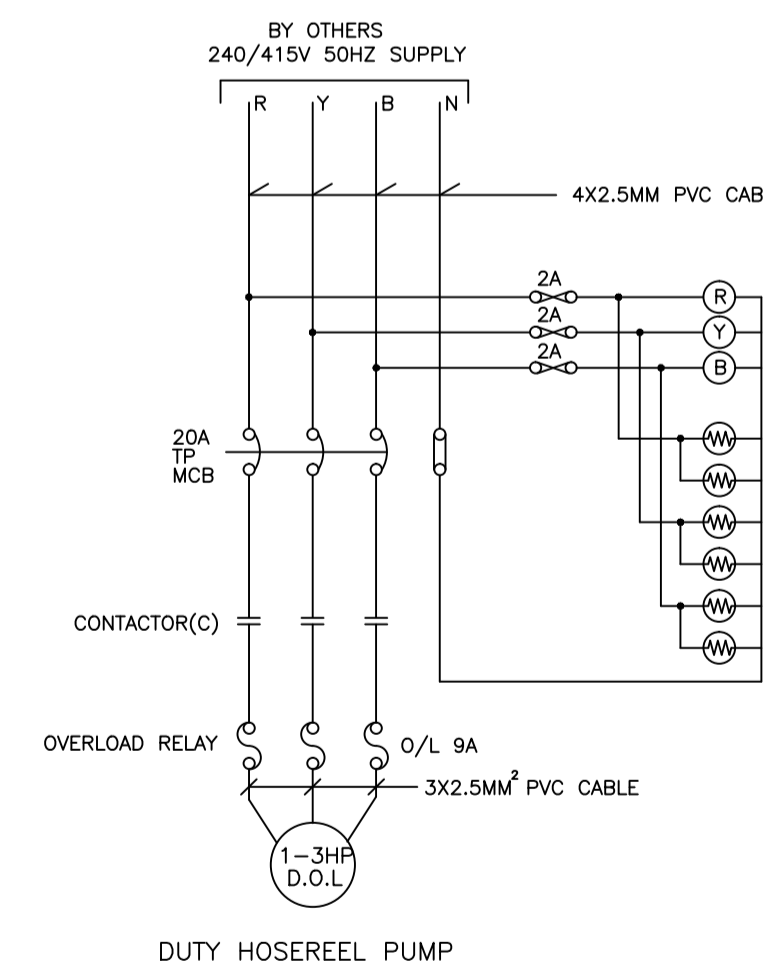
MIMIC DIAGRAM
14 ZONE FIRE ALARM CONTROL PANEL C/W 3 ZONE SPARES LOCATED AT GUARD HOUSE

FIRE ALARM CONTROL PANEL SINGLE LINE DIAGRAM

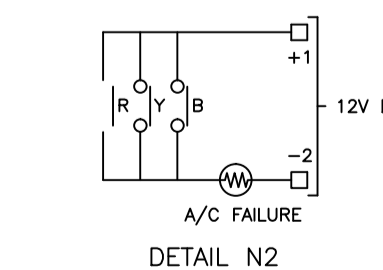
SKALA : N.T.5

230V AC POWER SUPPLY (BY OTHER)

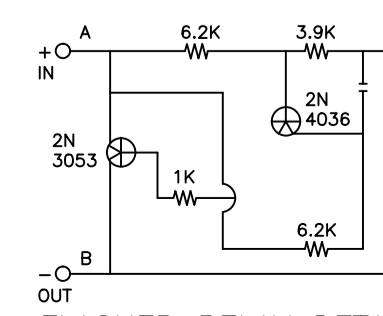
24V / 17AH SEALED LEAD ACID BATTERY



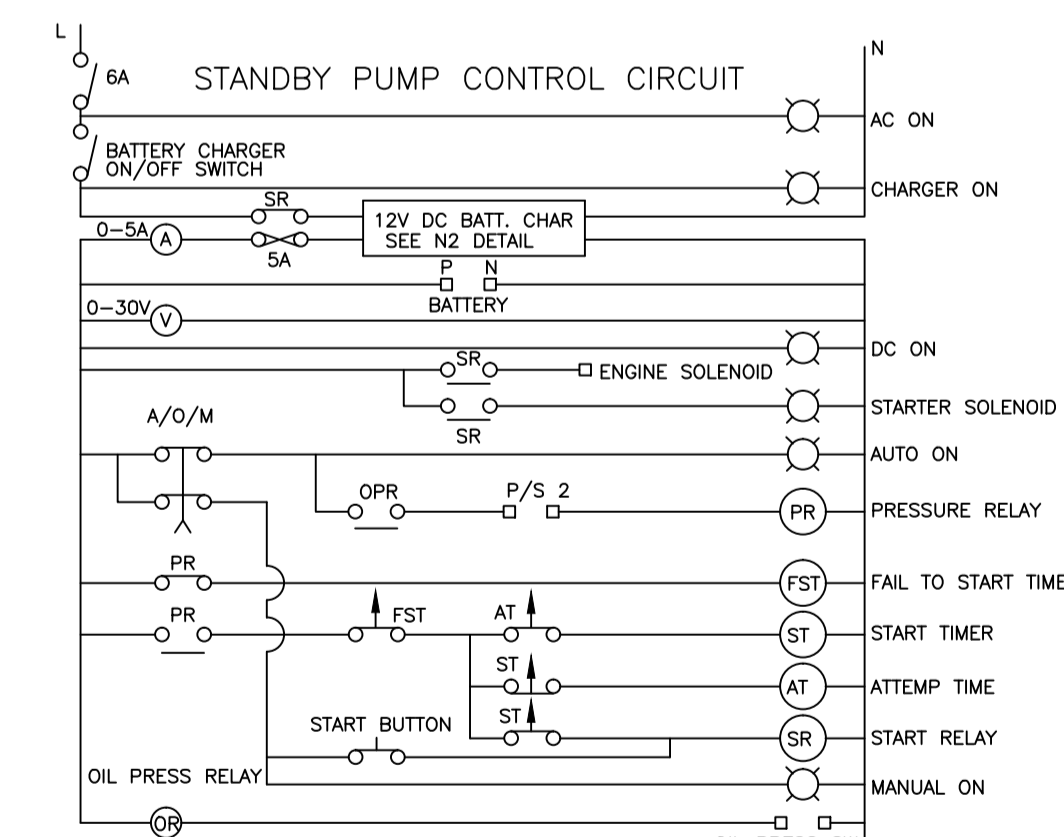
DUTY HOSEREEL PUMP



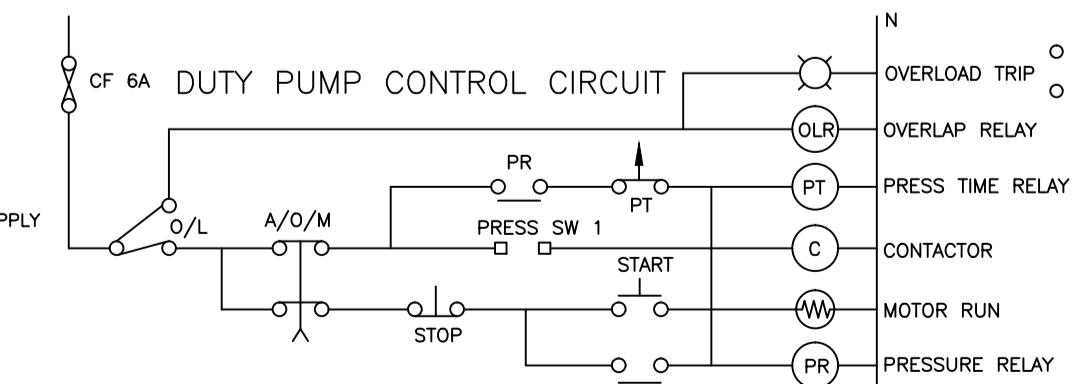
DETAIL N2



DETAIL N2



STANDBY PUMP CONTROL CIRCUIT

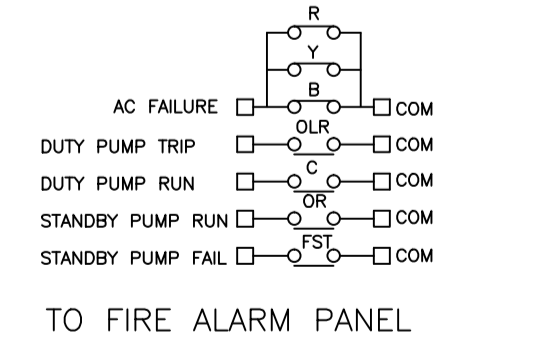


DUTY PUMP CONTROL CIRCUIT

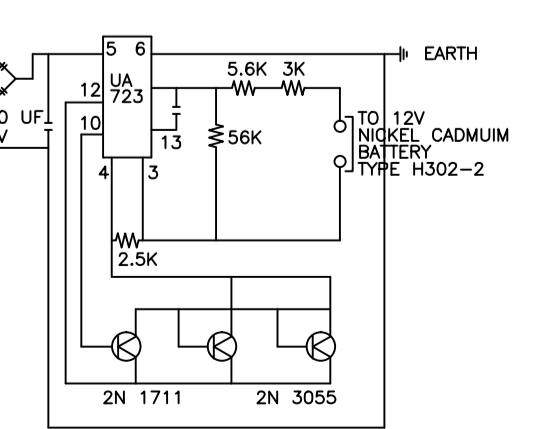
PUMP POWER CIRCUIT

SKALA : N.T.5

ITEM	DESCRIPTION	STANDARD	REMARKS
(A)	PORTABLE EXTINGUISHERS	BS 5306 PT3, 1985	✓
		MS 1179	
		MS 1180	
		MS 1181	
		MS 1182	
(B)	FIRE ALARM SYSTEM	BS 5445	✓
		LPC RULES 1990	
		BS 5839 PT 1, 1988	
		BS 5839 PT 2, 1988	
		BS 5839 PT 3, 1988	
		BS 5839 PT 4, 1988	
		BS 7273 PT 1, 1990	
		BS 6286, 1992	
		BS 5508 PT 1, 1988	
		BS 5588 PT 8, 1988	
		BS 5588 PT 10, 1988	
		MS 1404 PT 4, 1996	
(C)	FIRE HYDRANTS	BS 750, 1984	✓
		BS 5306 PT 1, 1976 (1988)	
		MS 1395	
(D)	HYDRAULIC HOSE REELS	BS 5306 PT 1, 1976 (1988)	N/A
		MS 1447, 1999	
(E)	AUTOMATIC SPRINKLERS	BS 5306 PT 2, 1990	N/A
		LPC RULES 1990	
		NEPA 13	
		BS 5041	
(F)	DRY / WET RISING MAIN	BS 5306 PT 1, 1976 (1988)	N/A
		BS 750, 1984	
		BS 5041	
		BS 1387	
		MS 1210 PT 2	
		MS 1210 PT 3	
		MS 1210 PT 4	
		MS 1210 PT 5	
(G)	FOAM SYSTEM	BS 5041 PT 5, 1974 (1988)	N/A
		BS 5306 PT 8	
		NEPA 30	
(H)	FIRE DAMPERS	AS 1682, 1974	N/A
(I)	FIRE LIFT	BS 5655	N/A
(J)	SMOKE CONTROL	AS 1668 PT 1, 1991	N/A
(K)	AUTOMATIC CARBON DIOXIDE EXTINGUISHING SYSTEM	NEPA 12	✓
		M.S. 1404	
		B.S. 7273	
(L)	RELIAR SIGN / EMERGENCY LIGHT	BS 5266/CFS	✓
(M)	WET CHEMICAL / CO2 SYSTEM	NEPA - 17A : 1998	✓
(N)	CLEAN AGENT	NEPA - 2001	N/A



12V DC BATTERY CHARGER (DETAIL N1)



TO FIRE ALARM PANEL