

Bogie Enterprises

Bogie-NN-v8
MetaTrader MT4 - Expert Advisor (EA)

Instruction Manual

Note: *It is recommended first to use a Demo Account to evaluate this EA before you begin Live Trading.*



Bogie-NN-v8

Setup and Operations Manual

Contents

	<u>Page</u>
1. Operating Instructions	3-4
2. Trading Risk	5
3. Trading Method	6
4. Optimization	7
5. History Data Download	11-12
6. FAQs	13-14
7. Disclaimer	15



Bogie-NN-v8

Operating Instructions

1. Run Installer Program to auto install necessary files into their correct directory folders.
2. Install Bogie-v8.ini Expiration Date file. The file must be placed in two (2) MetaTrader 4 directory folders.

Bogie-v8.ini path: C:\Program Files\MetaTrader 4\experts\files
Bogie-v8.ini path: C:\Program Files\MetaTrader 4\tester\files (This is needed to run Strategy Tester)
3. Re-Start [MetaQuotes MT4 Platform](#) to compile .ex4 files.
4. Open chart for EURUSD.
5. Set chart to H1 (60 Minutes) TimeFrame.
6. Attach EA to chart. No indicators need to be attached.
7. Right-click on a chart, then click Expert Advisor, then click properties or just click on a chart and press F7. Changeable variables are listed in the Input window. Click "Common Tab" and make sure "Allow live trading" box is checked.

Note: Settings below are example values only. EA is delivered with latest settings. Also, latest settings are available here: <http://bogie-enterprises.com/bogie-blog/bogie-set-files/>

UseEmail=true; // If true, will send email of order open and order close.
Need to have Email setup in Options of MetaQuotes MT4 Platform.

UseMM=true; // If true, Money Management (MM) sets lot size by calculation determined by Risk %. Standard account minimum 0.1 lot size.

MiniAccount=false; // If true, for Mini Accounts and allows minimum 0.01 lot size in Money Management routine (UseMM).

*Note: When Money Management (UseMM=true), MiniAccount=false is 0.1 lot size unit and MiniAccount=true is 0.01 lot size unit
Example: FXDD Live Mini Account has minimum lot size unit of 0.1, so set MiniAccount=false.*



Risk=5; // This is percent (%) of AccountFreeMargin to calculate lot size.
Example: (Standard Account) AccountFreeMargin=10,000, Risk=5. Lot Size=0.5. **\$10,000 * (Risk/100)/1000 = 0.5 lot size.**

Lots=0; // If UseMM==false, then use this to set fixed lot size;

TakeProfit=0; // Sets number of pips in profit to market close order. Seldom used.

StopLoss=200; // Sets number of pips in loss to market close order. On high daily volume pairs, the price can move up and down hundred of pips each day. This EA needs sufficient StopLoss to allow this up/down movement, but still there to stop a runaway loss.

TrailingStop=170; // Sets number of pips from current price to current StopLoss to trigger OrderModify() call to set new StopLoss.

BuyTrigger=54; // Sets threshold to trigger Buy (Long) trade.

SellTrigger=74; // Sets threshold to trigger Sell (Short) trade.

MagicNumber=12345; // Sets unique reference number to track trades.

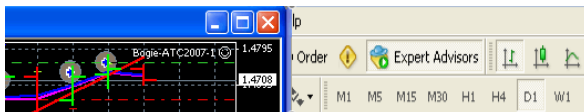
Note: *If your Broker trades on Sunday, like InterbankFX, then set both NoTradeDay inputs to value 6 or higher.*

NoTradeDay_1=0; // Numeric day-of-week to not trade. 0=Sunday, 1=Monday, 2=Tuesday, 3=Wednesday, 4=Thursday, 5=Friday, 6=Saturday

NoTradeDay_2=0; // Numeric day-of-week to not trade. 0=Sunday, 1=Monday, 2=Tuesday, 3=Wednesday, 4=Thursday, 5=Friday, 6=Saturday

RenewalWarning=true; // Alert when current date is within 5 days of Expert Advisor Expiration Date.

8. Confirm Expert Advisor is active. Smiley face in upper right-hand chart corner. If frowning face, click to highlight "Expert Advisor" button in MetaTrader menu bar.





Trading Risk:

The value you use for [Risk](#) input above has a dramatic effect on [Maximal DrawDown](#). Here is a chart that illustrates this:

Deposit: \$10,000 – **Date Range:** 2008.01.01 to 2008.06.01

Risk (%)	Equity	MaxDD (%)	R.O.I. (%)	Risk Level
15	137,668	27.06	1277	High
10	68,237	19.25	582	Moderate-High
5	27,939	13.55	179	Moderate
2.5	16,626	10.13	66	Moderate-Low
1	12,277	3.13	22	Low

R.O.I. (%) = Return on Investment (Percent)

MaxDD (%) = Maximal DrawDown (Percent)



Trading Method:

I can only suggest that you initially **do not** use the “Get Rich Overnight” High or M. High levels of trading. Until you get use to this Expert Advisor with its win/loss performance, I strongly suggest you start with the Low Risk Level settings above and only increase your Risk Level when you are completely confident of EA’s stable win/loss performance. This could take 3 to 6 months of trading. Even at Low Risk Level, ~30 % R.O.I. for three months trading is hard to beat anywhere in the legitimate investing world.

It is recommended first to use a Demo Account to evaluate this EA before you begin Live Trading.

Slow and steady equity growth should be the name of your game.



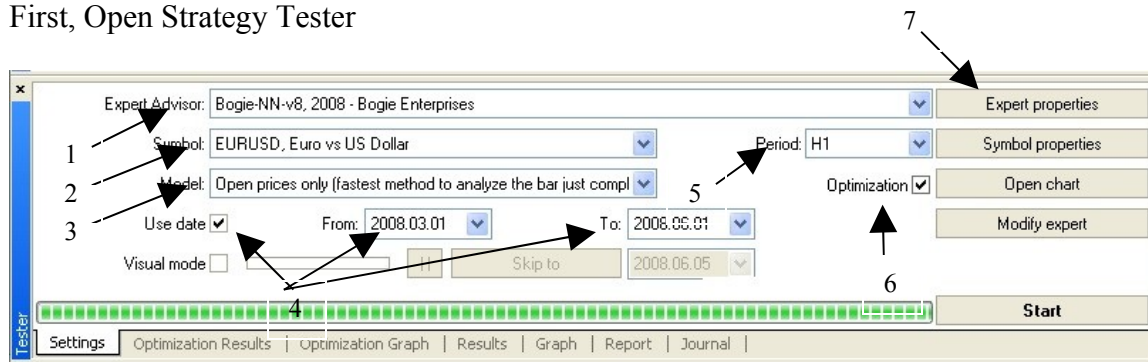
Optimization

Recommended Test Ranges

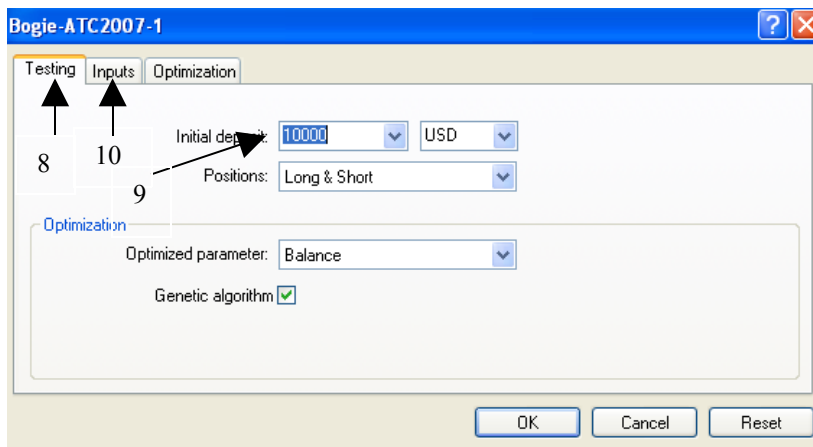
Inputs	Start	Step	Stop
TakeProfit	25	25	200
StopLoss	25	25	200
TrailingStop	25	25	200
BuyTrigger	10	5	100
SellTrigger	10	5	100

Optimization Step-By-Step Procedure (for only Bogie-NN-v8)

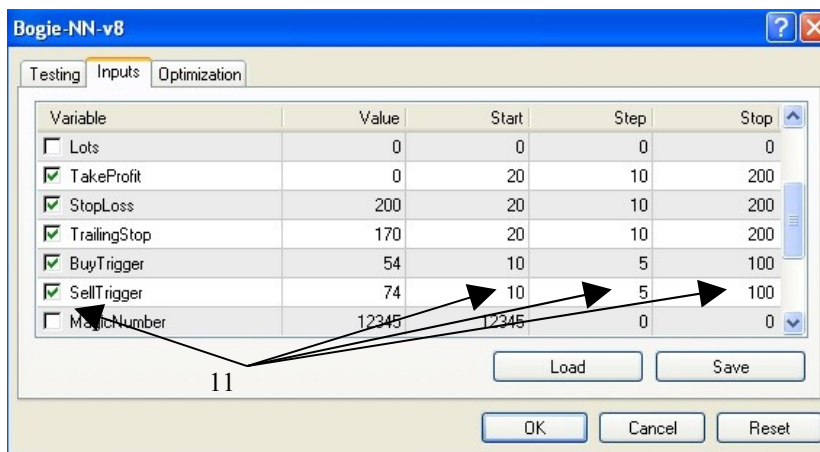
First, Open Strategy Tester



1. Select Expert Advisor
2. Select currency pair
3. Select "Open Prices Only". This will dramatically reduce Optimization test time.
4. Check Use date box. Then set test date range (From date – To date)
5. Select H1 period
6. Check Optimization box
7. Click Expert properties



8. Click Testing tab
9. Set test Initial deposit (leave other options as you see here)
10. Click Inputs tab



11. Then set Start-Step-Stop values for each variable to test
12. Then Click OK



Expert Advisor: Bogie-NN-v8, 2008 - Bogie Enterprises

Symbol: EURUSD, Euro vs US Dollar

Period: H1

Model: Open prices only (fastest method to analyze the bar just completed, or)

Optimization ☒

Use date ☒ From: 2008.03.01 To: 2008.06.01

Visual mode ☐ Skip to 2008.06.05

732 / 10 496 (2 476 099)

19 0:01:45 / 0:23:21

Start

Settings Optimization Results Optimization Graph Results Graph Report Journal

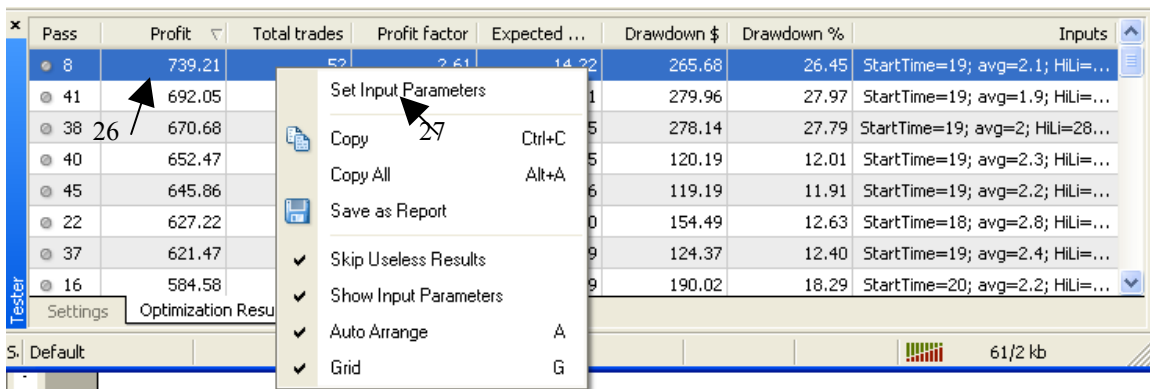
-

- Copyright © 2008, Bogie Enterprises



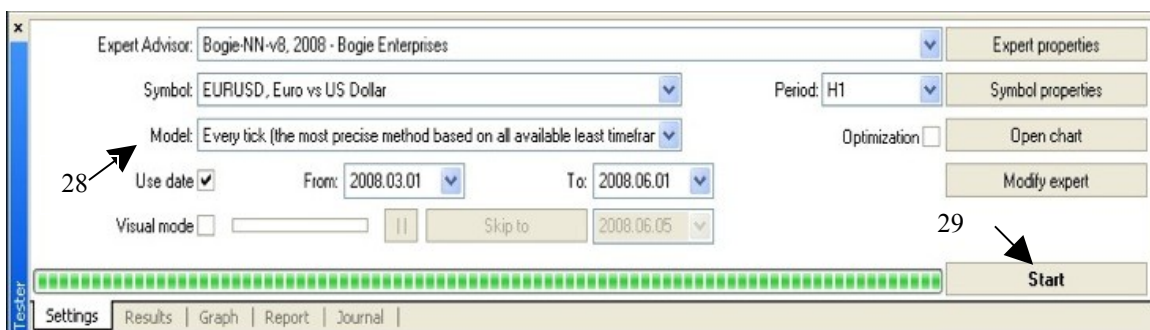
Pass	Profit	Total trades	Profit factor	Expected ...	Drawdown \$	Drawdown %	Inputs
8	739.21	52	2.61	14.22	265.68	26.45	StartTime=19; avg=2.1; HiLi=...
41	692.05	52	2.51	13.31	279.96	27.97	StartTime=19; avg=1.9; HiLi=...
38	670.68	53	2.46	12.65	278.14	27.79	StartTime=19; avg=2; HiLi=28...
40	652.47	52	2.83	12.55	120.19	12.01	StartTime=19; avg=2.3; HiLi=...
45	645.86	54	2.81	11.96	119.19	11.91	StartTime=19; avg=2.2; HiLi=...
22	627.22	51	2.23	12.30	154.49	12.63	StartTime=18; avg=2.8; HiLi=...
37	621.47	51	2.74	12.19	124.37	12.40	StartTime=19; avg=2.4; HiLi=...
16	584.58	50	2.27	11.69	190.02	18.29	StartTime=20; avg=2.2; HiLi=...

25. After Optimization test is complete, results are auto-sorted by profit.



26. Right-Click on a results row and an Options window opens

27. Click Set Input Parameters and test settings are transmitted to Expert properties



28. Reset Model "Open Prices Only" back to "Every Tick".

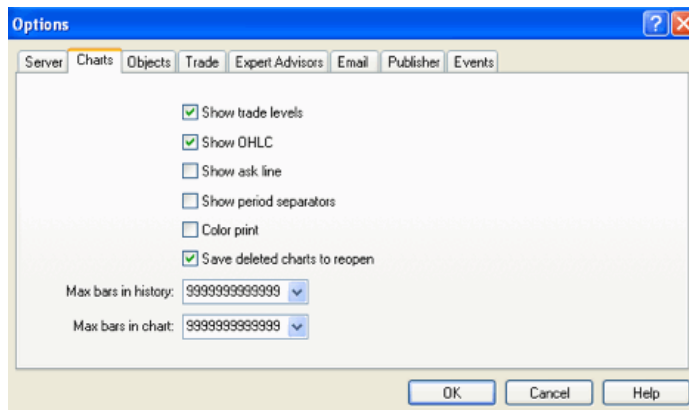
29. Click Start. Then Strategy Tester runs backtest on new settings.



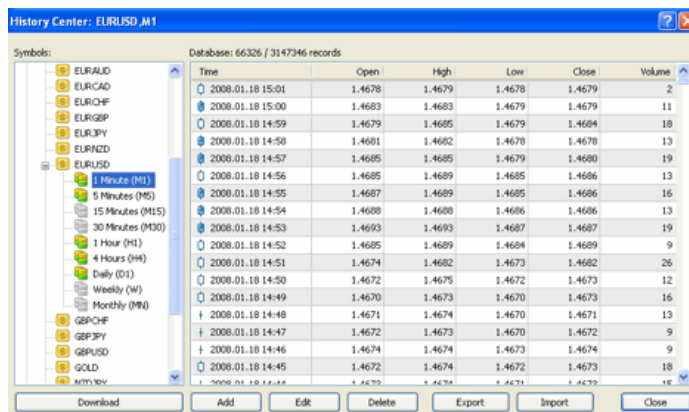
History Data Download:

Option 1.

1. Open MetaTrader MT4 platform.
2. Open Options in the Tools tab in upper menu bar.
3. Click Charts tab.
4. Change both “Max bars in history” and “Max bars in chart” to “999999999”.



5. Close Options window.
6. Open History Center in the Tools tab in upper menu bar.
7. Double click EURUSD M1 button.
8. Click “Download” button. (This downloads history data from MetaQuotes)



9. When download complete, close History Center window.

You are now ready for Strategy Tester (backtests) and Optimization.



Option 2. (download history data from your Broker)

1. Follow steps 1-5 above.
2. Stop and restart MetaTrader MT4 platform.
3. Open EURUSD chart. (set D1 timeframe)
4. Turn off chart "Auto Scroll" function.
5. Right –Click on chart and then select "Refresh".
6. Press and **hold down** "page up" keyboard key.
7. History data will start to download from Broker's server. (be patient, this will take a long time)
8. When download stops, release 'page up" key.
9. Repeat steps 4-8 for each lesser timeframe you selected in step 3. (example: You selected D1 in step 3. You need to repeat steps 4-8 for H4, H1, M30, M15, M5 and M1)

You are now ready to use Strategy Tester and Optimization.



Bogie-NeuralNetwork-1 Expert Advisor

FAQs

Do I need to leave EA running 24 hours per day?

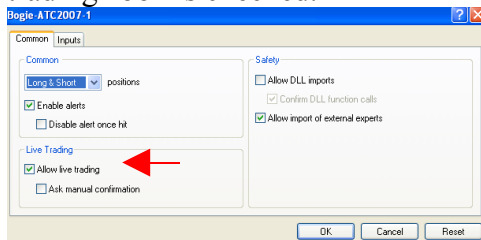
At StartTime, EA must be running to open new position/s (trade/s). And, while there are open position/s, the EA must be running to monitor and to exit open position/s. If there are no open position/s, after ServerTime has passed StartTime, the EA (MetaTrader program) can be shut down and then restarted before next StartTime.

Will Bogie Enterprises provide regular Optimization updates?

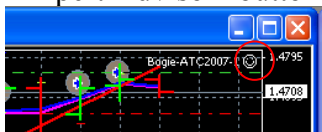
Yes, on a regular basis. This does not mean there will be setting changes every month. If EA tests well on current settings, there will be no recommended changes for that month.

Why does EA not open orders?

1. Click on chart, then press F7, then click "Common Tab". Make sure "Allow live trading" box is checked.



2. Make there is a Smiley Face on chart in upper right corner. If "x", click to highlight "Expert Advisor" button in MetaTrader upper menu bar.



Can I run this EA on a Mini Account?

Yes, set MiniAccount=true. When the Money Management UseMM=true, mini account minimum lot size is 0.01. To use micro lot size (0.001), set UseMM=false. Then enter set lots=0.001 or whatever lot size you want.

What size deposit account can I run with this EA?

This EA can run deposits from \$10 to \$million. Minimum Deposit is set by your Broker.

Can I run other EAs and also manually trade on same pair that EA is on?

Yes, you can run other EAs on same pair and manually trade same pair on same account.



Can I use EA on other accounts and other computers?

Yes, you can run EA on as many Demo or Live accounts as you want.

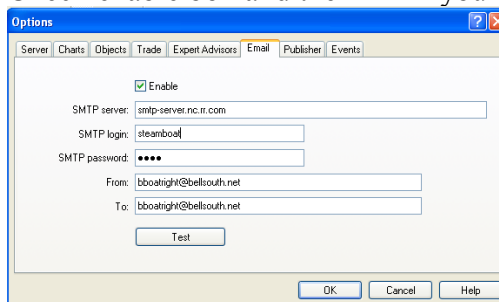
Bogie Enterprises grant to Customer a nonexclusive and nontransferable license to use the Bogie-ATC2007-1 series Expert Advisor ("EA") in object code form (.ex4) solely on central processing units owned or leased by Customer.

Do you have preferred Broker to recommend?

I have used MetaQuotes for Demo and FXDD and InterbankFX for Live accounts without problems.

How do I receive email of order open and order close status?

1. Set UseEmail=true.
2. Open Options in the Tools tab in upper MetaTrader menu bar.
3. Click Options and then click Email tab.
4. Check enable box and then fill in your mail server information.



**Disclaimer:**

This risk disclaimer is meant to inform the purchaser of the potential financial risks of engaging in foreign exchange trading. The transaction of such financial instruments known as forex, fx, or currency, and dealt on a valued basis known as 'spot' or 'forward', 'day trading' and 'option', can contain a substantial degree of risk. Before deciding to undertake such transactions, a user should carefully evaluate whether his/her financial situation is appropriate for such transactions. Trading foreign exchange may result in a substantial or complete loss of funds and therefore should only be undertaken with risk capital. The definition of risk capital is funds that are not necessary to the survival or well being of the user. Opinions and analysis on potential expected market movements contained within this sales transaction are not to be considered necessarily precise or timely, and due to the public nature of the Internet, I cannot at any time guarantee results. Trading online, no matter how convenient or efficient it may be, does not necessarily reduce the risks associated with foreign exchange trading, and I do not accept any responsibility towards any customer, member or third party, acting on such information contained in this sales transaction and supporting documents as to the accuracy or delay of information such as quotations, news, and charts derived from quotations.